

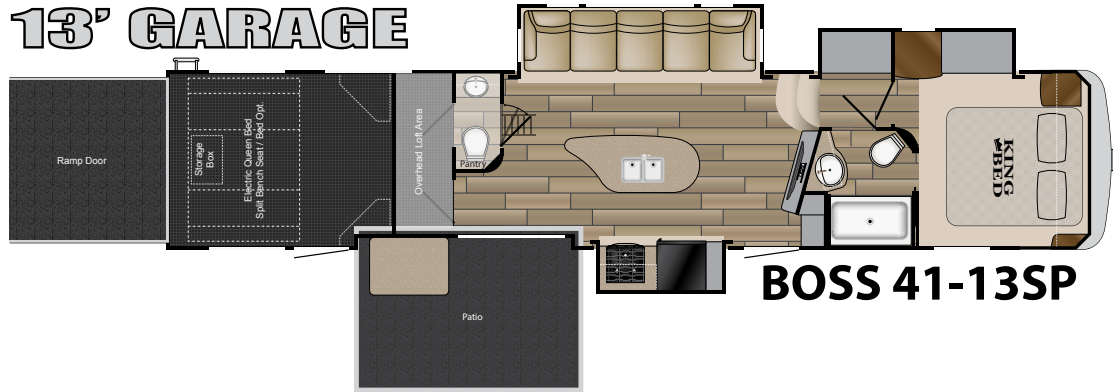
# BOSS



[www.CRUISERRV.com](http://www.CRUISERRV.com)

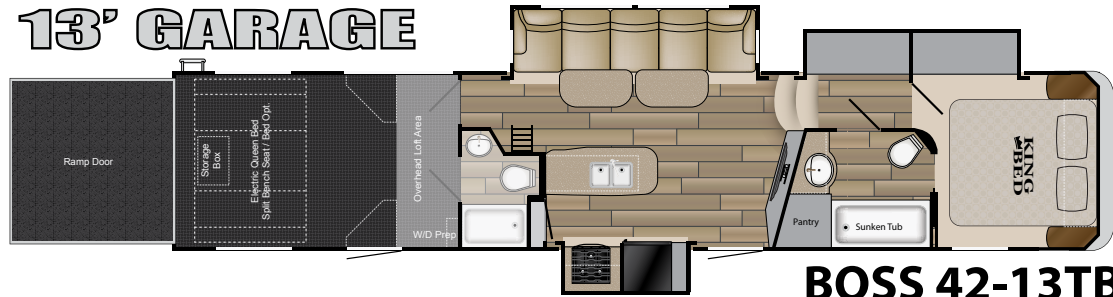
# BOSS

## 13' GARAGE



**BOSS 41-13SP**

## 13' GARAGE



**BOSS 42-13TB**

### KITCHEN / INTERIOR

- LED lighting throughout
- 18 cu.ft. refrigerator
- Solid surface countertops
- Spring loaded hidden hinges
- Steel ball-bearing drawer guides
- Large cabinet storage
- Detachable sprayer faucet
- Deep stainless steel kitchen sink
- 30" residential space saver microwave oven
- Solid surface sink covers
- Custom monitor control panel
- (2)15,000 BTU A/C whisper quiet system
- Air vent in loft
- His/hers reading lights in loft
- Overhead cabinets or shelving throughout
- High quality residential furniture
- Patio sliding door (N/A 42-13TB)

### BATH & BED

- Single level master suite
- Residential one-piece fiberglass Neo-Angle shower or sunken tub
- Foot flush porcelain commode
- Heat and A/C vents in main bathroom
- His and hers closets
- Large vanity drawers
- Skylight over shower
- Power bath vent
- Residential pillow top King mattress (most models)

### EXTERIOR

- Correct track alignment system
- Six point hydraulic leveling system Level-Up
- 16" G-rated tires with aluminum wheels
- One-piece walk-on EPDM roof
- Welded tubular aluminum construction
- Stunning exterior graphics
- 12" I-beam powder coated steel frame
- Heated and enclosed underbelly
- Triple 7,000 lb. axles
- E-Z Flex suspension
- Industry leading, unobstructed pass-through storage
- Universal docking center (All system hook-ups located in one, convenient, concealed compartment)
- Easy grip quad steps
- Entry assist handle
- 80 Amp power convertor
- 50 Amp service with detachable cord
- Hi-flow water pump
- Deep tinted max vent windows
- Radius, 1" thick slam baggage doors
- Rain gutters with spouts
- (Four) side scare lights
- Rear flood lights x two
- Exterior hot/cold shower with high pressure nozzle
- Dual 30 lb. LP tanks
- Auto transfer switch
- Wide body design
- Huge 94" wide door opening

- Enclosed gooseneck
- 5.5 KW generator with fuel station & timer
- R-34 roof, R-38 floor,
- R-11 sidewall insulation
- LP quick connect for BBQ grills
- Side awning with LED lights
- Painted front cap
- Rear folding side ladder

### AV EQUIPMENT

- 32" color LCD T.V. in bedroom
- Cable TV/Ssatellite hook-ups
- 5.1 Digital Dolby surround sound in living area with Bluetooth and Blu-ray
- 58" LCD HDTV flat screen TV (most models)
- Two exterior marine grade speakers
- Separate DVD/CD/MP3/ AM/FM Bluetooth stereo for garage and exterior

### GARAGE AREA

- Plywood garage flooring
- Steel D-ring tie downs
- 3000 lb. rated ultra-light ramp door
- Large 8' garage door ramp
- Recessed hidden beaver-tail storage compartment
- Heat duct in garage
- Electric rear screen
- Oversized windows max ventilation
- Decorative chair rail
- Built-in overhead cabinets with

- entertainment center
- Power Queen beds with convertible sofa
- Heat strip in the garage A/C

### OPTIONS

- Canadian arctic package
- Free standing table with sofa
- Removable edged cargo carpet
- Dual pane windows
- Ramp door patio with electric garage door awning
- Patio stairs
- Three seasons wall
- 40" outside TV
- 3rd A/C in living area
- 23 cu ft residential refrigerator with inverter and batteries

### Supreme Package:

- Painted front cap
- Convection oven
- 2nd fuel cell 20gal
- 40" garage tv
- Solid surface bedroom counter top
- 2nd rear awning
- Central vacuum
- Backlight slide out fascia



866-277-5630 — CRUISERRV.COM

Cruiser RV, LLC reserves the right to make changes without notice or obligation. Some photography shows optional items available at additional cost. Weights do not include options. All standard features, options and specifications are subject to change. Please contact your authorized dealer for details.

3,000 Litho 5/16

YOUR LOCAL DEALER:

