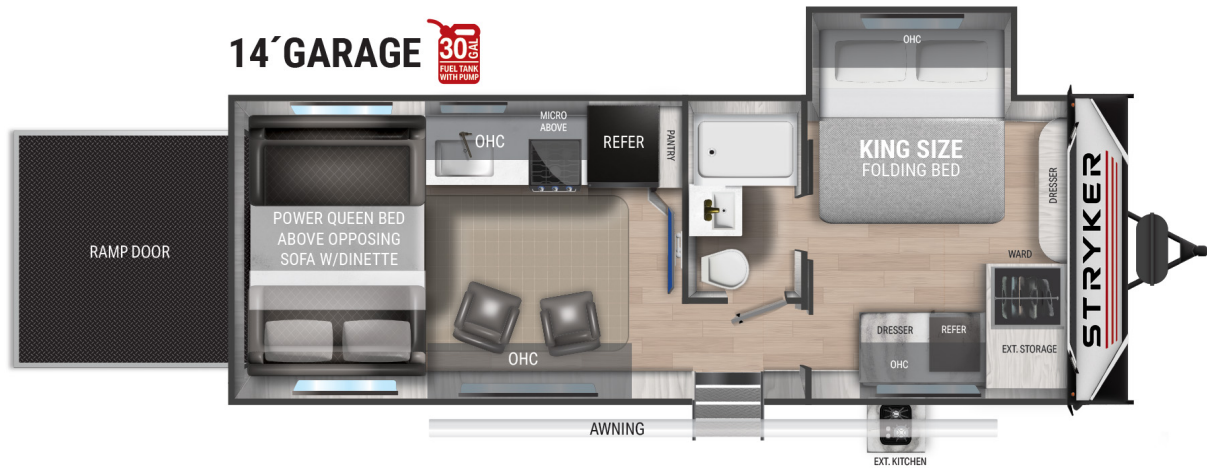




# STRYKER



## Top Selling Features

- Painted, molded fiberglass front cap
- Upgraded suspension with greasable shackle bolts and 16" E-Rated tires
- Azdel composite laminated sidewalls
- Generator prep with 30 gallon fuel tank and fuel pump for toys
- Easy load 8 foot ramp door with beavertail transition at garage entry
- Patent Pending king bed slide system
- Enhance cargo space with 5,000 lb tie down rings
- Premium sound system with amplifier, subwoofer, and indoor/outdoor speakers
- Large windows with blackout roller shades
- 5/8" Tongue and groove plywood flooring

## Stryker ST2714

GWVR	12,800 Lbs
Dry Weight	7,795 Lbs
Hitch Weight	1,074 Lbs
Axles	2 x 6000
Fresh Tank	98 Gal
Black Tank	30 Gal
Water Heater	10 Gal
Furnace	35,000 BTU
Air Conditioner	15,000 BTU
Number of Slides	1
Bedroom Height	7'-5"
Awning Length	19'
Cook Top	3 Burner
Traditional Oven	Yes
Convection Oven	No
Generator Prep	Standard
Sleep Capacity	5-6 People

\*Overall length defined as tow point (ball coupler for travel trailers / king pin for fifth wheel trailers) to rear bumper. It does not include rear ladder or spare tire. Optional pin boxes will affect overall length. \*\*Garage length is defined as ramp door to full interior wall. Standard or optional equipment may reduce overall garage dimensions. Information provided is accurate as of 3/3/2021 and is subject to update & change. Please confirm with your local Cruiser Dealership for up to date information.



[www.cruiservv.com](http://www.cruiservv.com)

Cruiser RV, LLC  
7805 North SR 9 • Howe, IN 46746  
260-562-3500