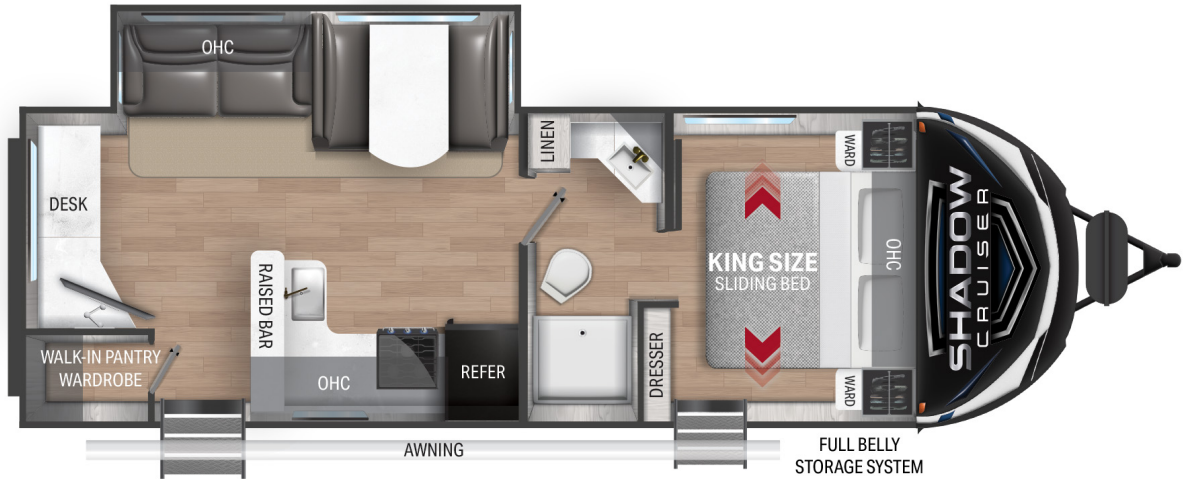




SHADOW CRUISER



Top Selling Features

- Painted, molded fiberglass front cap with LED lights
- Azdel composite laminated sidewalls
- 5-sided aluminum framing
- Patent pending full belly pass through storage system
- Surround seal slide system with rain gutter
- Tongue and groove plywood floors
- Patent Pending king bed slide system
- Seamless edge kitchen countertops for enhanced durability
- Dual ducted A/C and high BTU ducted furnace
- Industry first under-bed pet palace design

Shadow Cruiser 257MKS

GWVR	7,720 Lbs
Dry Weight	5,812 Lbs
Hitch Weight	720 Lbs
Axles	2 x 3500
Fresh Tank	44 Gal
Black Tank	30 Gal
Water Heater	6 Gal
Furnace	30,000 BTU
Air Conditioner	13,500 BTU
Number of Slides	1
Bedroom Height	6'-8-1/2"
Awning Length	20'
Cook Top	3 Burner
Traditional Oven	Yes
Convection Oven	No
Generator Prep	N/A
Sleep Capacity	5-6 People

*Overall length defined as tow point (ball coupler for travel trailers / king pin for fifth wheel trailers) to rear bumper. It does not include rear ladder or spare tire. Optional pin boxes will affect overall length. **Garage length is defined as ramp door to full interior wall. Standard or optional equipment may reduce overall garage dimensions. Information provided is accurate as of 3/3/2021 and is subject to update & change. Please confirm with your local Cruiser Dealership for up to date information.



www.cruiserv.com
 Cruiser RV, LLC
 7805 North SR 9 • Howe, IN 46746
 260-562-3500