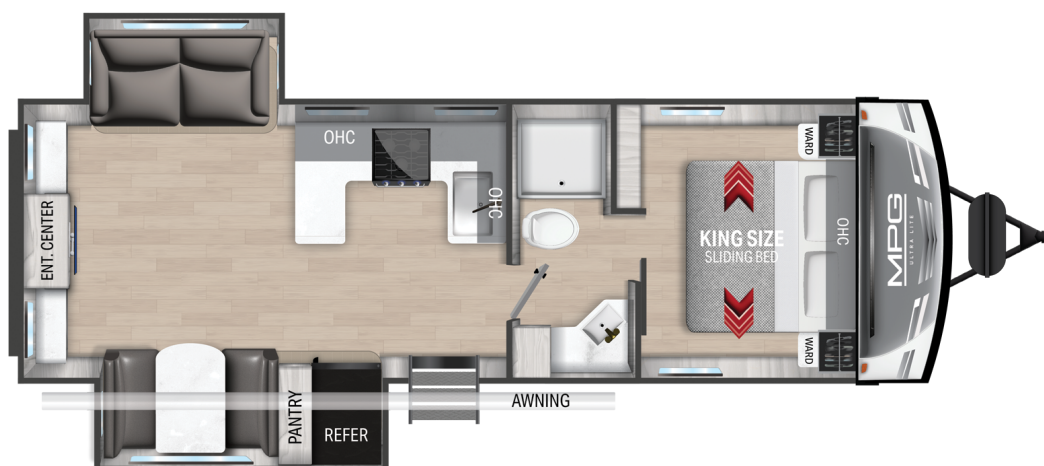




MPG



Top Selling Features

- Patent Pending King Bed Slide System
- 5/8" Seamless Floor Decking
- 40" LED TV with Four Speaker Sound-bar System
- Seamless Kitchen Countertops
- Hardwood Residential Cabinets with Hidden Hinge
- Azdel Composite Laminated Walls
- Fully Molded, Fiberglass Cap with LED lights
- Ultra-Light Aluminum Construction
- 30" black glass entry door
- Telescoping Handrail with triple entry

Exterior Features

- High gloss fiberglass front cap with LED lighting
- 30" black glass main entry door
- Triple entry steps with Telescoping Handrail
- Exterior wall mount speakers with LED light



LED awning light
CRUISER RV
Power Stabilizer and Tongue Jacks

www.cruiservv.com
Cruiser RV, LLC
7000 North SR 9 • Howe, IN 46746
260-562-3500

MPG 2780RE

GWVR	9,493 Lbs
Dry Weight	6,689 Lbs
Hitch Weight	693 Lbs
Axles	2 x 4400
Fresh Tank	46 Gal
Black Tank	30 Gal
Water Heater	6 Gal
Furnace	30,000 BTU
Air Conditioner	13,500 BTU
Number of Slides	2
Bedroom Height	6'-10 1/2"
Length	31'-11"
Awning Length	18'
Cook Top	3 Burner
Traditional Oven	Yes
Convection Oven	No
Sleep Capacity	5-6 People

*Overall length defined as tow point (ball coupler for travel trailers / king pin for fifth wheel trailers) to rear bumper. It does not include rear ladder or spare tire. Optional pin boxes will affect overall length. **Garage length is defined as ramp door to full interior wall. Standard or optional equipment may reduce overall garage dimensions. Information provided is accurate as of 3/3/2021 and is subject to update & change. Please confirm with your local Cruiser Dealership for up to date information.

Interior Features

- LED Batten Strip interior lighting with Dimmer