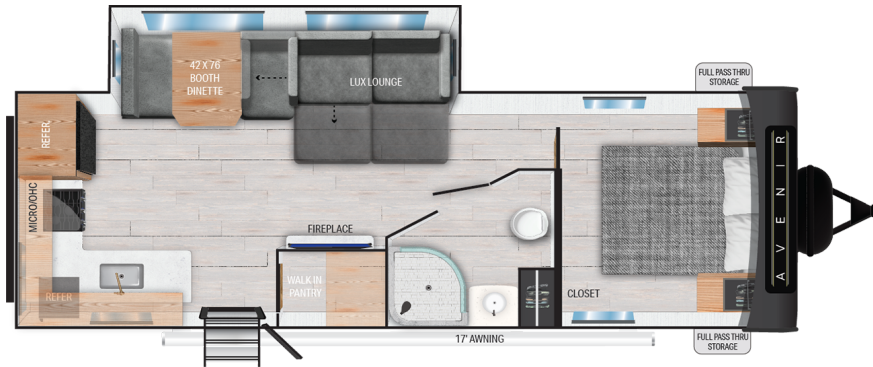




# A V E N I R



## Top Selling Features

- Cruiser Curated Interiors
- Lux Lounge Offering Maximum Seating and Flexibility
- Residential Seamless Counter Tops
- Oversized Tinted Windows
- Fireplace (most models)
- 60 x 80 Queen Bed
- LED Batten Strip Lighting with Dimmer
- Quality Components for Maximum Performance
- Outside Refrigerator
- Cruiser Climate Defense Heated/Enclosed Underbelly
- True Flush Floor Slides
- Tankless On-Demand Water Heater
- Solid Flip Down Steps with Telescoping Handrail
- Cruiser Connect
- WI-FI Prep

[www.cruiserrv.com](http://www.cruiserrv.com)



Cruiser RV, LLC  
7805 North SR 9, Home WI 46746  
260-562-3500

## Charging Outlets

- Backup Camera and TPMS Prep
- Solid Wood Lighted Soft with LED Accent Lighting

## Avenir 25RK

GWVR	7,532 Lbs
Dry Weight	6,052 Lbs
Hitch Weight	532 Lbs
Axles	2 x 3500
Fresh Tank	44 Gal
Black Tank	30 Gal
Water Heater	0 Gal
Furnace	30,000 BTU
Air Conditioner	13,500 BTU
Number of Slides	1
Bedroom Height	6'-8"
Length	29'-6"
Awning Length	17'
Cook Top	3 Burner
Traditional Oven	Yes
Convection Oven	No
Sleep Capacity	3-4 People

\*Overall length defined as tow point (ball coupler for travel trailers / king pin for fifth wheel trailers) to rear bumper. It does not include rear ladder or spare tire. Optional pin boxes will affect overall length. \*\*Garage length is defined as ramp door to full interior wall. Standard or optional equipment may reduce overall garage dimensions. Information provided is accurate as of 3/3/2021 and is subject to update & change. Please confirm with your local Cruiser Dealership for up to date information.