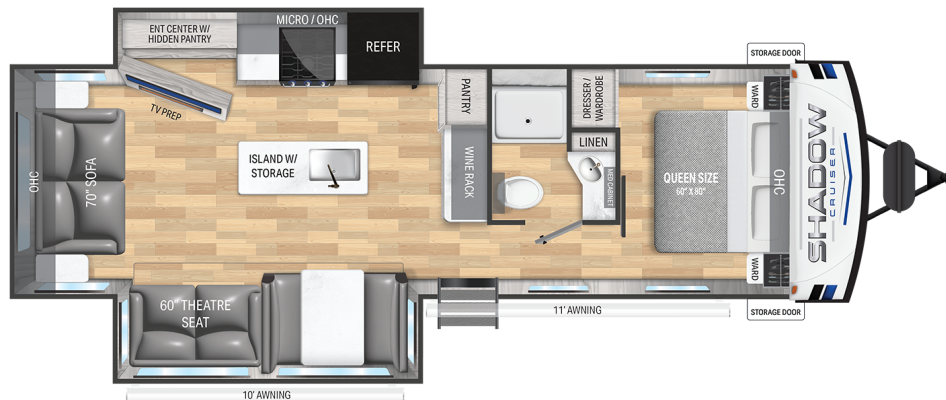




# SHADOW CRUISER



## Top Selling Features

- Painted, molded fiberglass front cap
- Azdel composite laminated sidewalls
- 5-sided aluminum framing
- Surround seal slide system with rain gutter
- 5/8" seamless floor decking
- Residential 60"x80" Queen Bed with Store More Base
- Seamless edge countertops for enhanced durability
- Dual ducted A/C and high BTU ducted furnace
- Power Stabilizer Jacks

## Exterior Features

- Rain-away barreled roof
- Over 40 cubic feet of pass-through storage
- XL baggage doors with slam latches and magnet catches

## Shadow Cruiser 300RLS

GWVR	9,890 Lbs
Dry Weight	7,440 Lbs
Hitch Weight	1,090 Lbs
Axles	2 x 4400
Fresh Tank	46 Gal
Black Tank	30 Gal
Water Heater	0 Gal
Furnace	30,000 BTU
Air Conditioner	13,500 BTU
Number of Slides	2
Bedroom Height	6'-8"
Length	34'-11"
Awning Length	11'
Cook Top	3 Burner
Traditional Oven	Yes
Convection Oven	No
Sleep Capacity	5-6 People

\*Overall length defined as tow point (ball coupler for travel trailers / king pin for fifth wheel trailers) to rear bumper. It does not include rear ladder or spare tire. Optional pin boxes will affect overall length. \*\*Garage length is defined as ramp door to full interior wall. Standard or optional equipment may reduce overall garage dimensions. Information provided is accurate as of 3/3/2021 and is subject to update & change. Please confirm with your local Cruiser Dealership for up to date information.



30" main entry door with solid entry step  
**CRUISER RV**  
 Telescoping Handrail  
 Cruiser RV, LLC  
 7805 North SR 9 • Howe, IN 46746

- Dual 20lb. LP tanks
- Large power awning with LED lights
- Tinted windows
- TPO roof membrane

[www.cruiservv.com](http://www.cruiservv.com)

260-562-3500