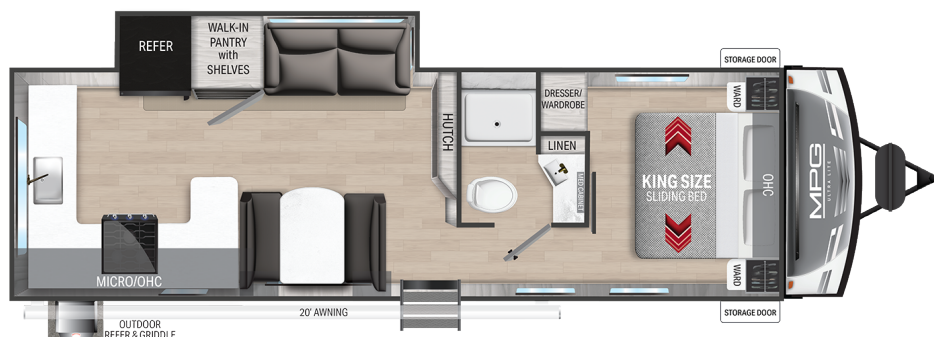


# MPG



## Top Selling Features

- Patent Pending King Bed Slide System
- 5/8" Seamless Floor Decking
- 40" LED TV with Four Speaker Sound-bar System
- Seamless Kitchen Countertops
- Hardwood Residential Cabinets with Hidden Hinge
- Azdel Composite Laminated Walls
- Fully Molded, Fiberglass Cap with LED lights
- Ultra-Light Aluminum Construction
- 30" black glass entry door
- Telescoping Handrail with triple entry

## Exterior Features

- High gloss fiberglass front cap with LED lighting
- 30" black glass main entry door
- Triple entry steps with Telescoping Handrail
- Exterior wall mount speakers with LED light



LED awning light  
**CRUISER RV**  
Power Stabilizer and Tongue Jacks

[www.cruiservv.com](http://www.cruiservv.com)  
Cruiser RV, LLC  
7000 North SR 9 • Howe, IN 46746  
260-562-3500

## MPG 2520RK

GWVR	7,546 Lbs
Dry Weight	5,936 Lbs
Hitch Weight	546 Lbs
Axles	2 x 3500
Fresh Tank	46 Gal
Black Tank	30 Gal
Water Heater	0 Gal
Furnace	30,000 BTU
Air Conditioner	13,500 BTU
Number of Slides	3
Bedroom Height	6'-8"
Length	29'-5"
Awning Length	20'
Cook Top	3 Burner
Traditional Oven	Yes
Convection Oven	No
Sleep Capacity	5-6 People

\*Overall length defined as tow point (ball coupler for travel trailers / king pin for fifth wheel trailers) to rear bumper. It does not include rear ladder or spare tire. Optional pin boxes will affect overall length. \*\*Garage length is defined as ramp door to full interior wall. Standard or optional equipment may reduce overall garage dimensions. Information provided is accurate as of 3/3/2021 and is subject to update & change. Please confirm with your local Cruiser Dealership for up to date information.

## Interior Features

- LED Batten Strip interior lighting with Dimmer